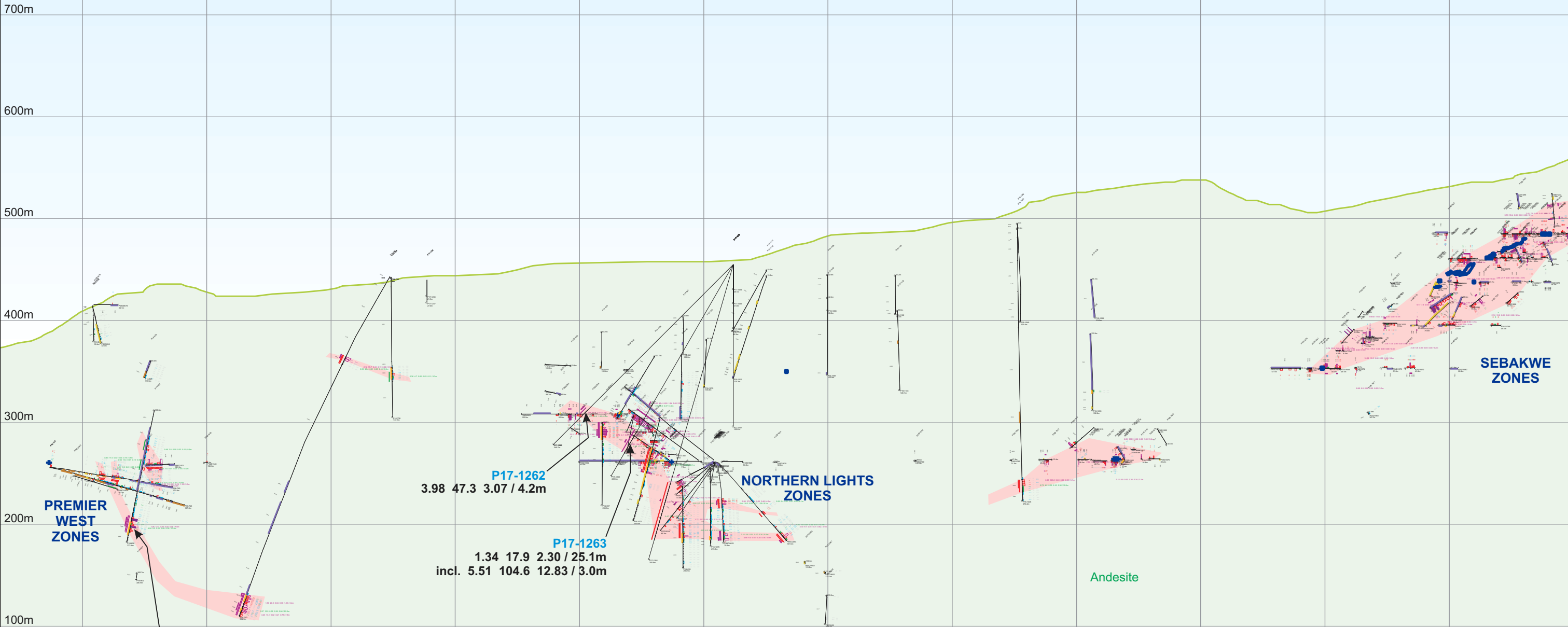


SouthWest E000 E020 E040 E060 E080 E100 E120 E140 E160 E180 E200 E220 NorthEast

HISTORIC and ASCOT DRILLING



DRILL HOLE LEGEND

DRILL HOLE ID	ASSAYS	INTERCEPTS	COMMENTS
P14-628	4.04 Au, 9.2 Ag, 0.36 Zn	17.0m	
P17-1262	3.98 Au, 47.3 Ag, 3.07 Zn	4.2m	
P17-1263	1.34 Au, 17.9 Ag, 2.30 Zn	25.1m	
P14-707	1.94 Au, 6.2 Ag, 0.87 Zn	28.5m	

LEGEND

- Old Underground Workings (Blue line)
- Mineralized Intercept: (>0.3, >0.5, >2.0 g/t AuEq) (Colored lines)
- Ascot Drill Hole ID (Blue text)
- Au Ag Zn / width g/t g/t % m (Text)
- Mineralized Zones (indicated by drilling) (Pink shaded area)
- Mineralized Zones (inferred) (Yellow shaded area)

(Note: Section has a 30m depth)



Ascot Resources Ltd.
PREMIER & DILWORTH PROPERTIES
 British Columbia, Canada
PREMIER AREA
DRILL CROSS-SECTION
W090
 (Looking NorthWest)