



WORLD-CLASS HIGH-GRADE **GOLD** AND SILVER  
IN BRITISH COLUMBIA, CANADA

# CAUTIONARY STATEMENT



This presentation contains certain forward-looking information concerning the business of Ascot Resources Ltd. (the "Corporation"). All statements, other than statements of historical fact, included herein including, without limitation; statements about the exploration of the Premier Property and completion of the acquisition of the Premier Property, are forward-looking statements. These forward-looking statements are based on the opinions of management at the date the statements are made and are based on assumptions and subject to a variety of risks and uncertainties and other factors that could cause actual events to differ materially from those projected in forward-looking statements. Important factors that could cause actual results to differ materially from the Corporation's expectations include fluctuations in commodity prices and currency exchange rates; uncertainties relating to interpretation of drill results and the geology, continuity and grade of mineral deposits; the need for cooperation of government agencies and native groups in the exploration and development of properties and the issuance of required permits; the need to obtain additional financing to explore and develop properties and uncertainty as to the availability and terms of future financing; the possibility of delay in exploration programs and uncertainty of meeting anticipated program milestones; uncertainty as to timely availability of permits and other governmental approvals. The Corporation is under no obligation to update forward-looking statements if circumstances or management's opinions should change, except as required by applicable securities laws. The reader is cautioned not to place undue reliance on forward-looking statements.

**Qualified Person:** The scientific and technical data for this presentation has been prepared by Graeme Evans P.Geo. for the Ascot Resources properties. Graeme Evans P.Geo. acts as “qualified person” under NI 43-101 Standards of Disclosures for Mineral Projects.

# MANAGEMENT AND LEADERSHIP



## **DEREK WHITE** President, CEO

Derek White has over 30 years of experience in the mining and metals industry. He holds an undergraduate degree in Geological Engineering from the University of British Columbia and is also a Chartered Accountant. Prior to joining Ascot Resources Ltd. Mr. White, was the Principal of Traxys Capital Partners LLP, a private equity firm specializing in the mining and minerals sectors. Mr. White was President and CEO of KGHM International Ltd. from 2012 to 2015, and also held the positions of Executive Vice President, Business Development and Chief Financial Officer of Quadra FNX Mining Ltd. from 2004 to 2012. Mr. White has held executive positions with International Vision Direct Ltd., BHP-Billiton Plc, Billiton International Metals BV and Impala Platinum Ltd., in Vancouver, Toronto, London, The Hague, and Johannesburg. Mr. White is also an ICSA Accredited Director.

---

## **JOHN KIERNAN** COO

John Kiernan is a Mining Engineer with over 30 years of mine operating, engineering, consulting, corporate and financial experience, including a cumulative four years as an underground miner and operating foreman. He was most recently VP Project Development for Magellan Minerals (acquired by Anfield Gold Corp), and is also a director of Kapuskasing Gold Ltd. Previously he was Manager Project Evaluation for QuadraFNX/ KGHM International, Mining Analyst for PI Financial Corp and VP Mining/Mine Manager for Roca Mines Inc. In the period from 1987 to 2006, Mr. Kiernan held various senior engineering positions with Strathcona Mineral Services, Inco Ltd., Wardrop and AMEC. Mr. Kiernan has a B.Sc in Mining Engineering from Queen's University, and an MBA from Laurentian

---

## **CAROL LI** CFO

Ms. Carol Li is a Canadian Chartered Professional Accountant (CPA) with over 20 years of financial and executive management experience. Prior to joining Ascot Resources Limited in November 2017, Carol spent eight years at Quadra Mining Ltd./Quadra FNX Mining Ltd. as Corporate Controller and then five years at its successor KGHM International Ltd. as Vice President, Finance. She was a key member in the leadership team that transitioned the company from one mine junior producer to a multi-national company with six operating mines and three development projects. Before joining Quadra Mining, Carol held various senior financial roles at Cartier Partners Securities and FPC Investment Inc.

---

## **GRAEME EVANS** Consulting Geologist

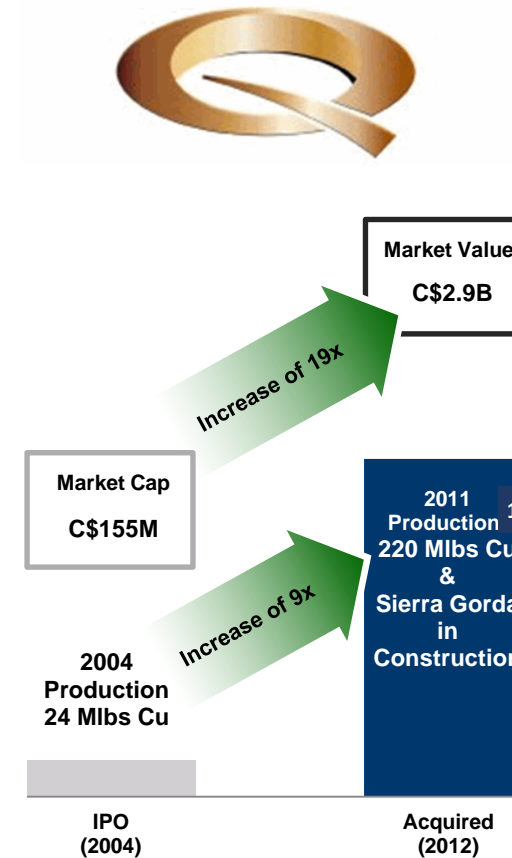
Graeme graduated from UBC (1983) BSc Geology . Graeme has been with Ascot since 2009. Since graduation Graeme has worked continuously in mineral exploration throughout the cordillera from Alaska to Nevada for a number of senior companies including Hudson Bay Mining, B.P. Selco, Inmet and more recently Teck Resources (1991-2009). Graeme is a registered PGeo with APEGBC and APGO. Graeme Evans is the Company's qualified person.

---

# TRACK RECORD OF VALUE FOR SHAREHOLDERS

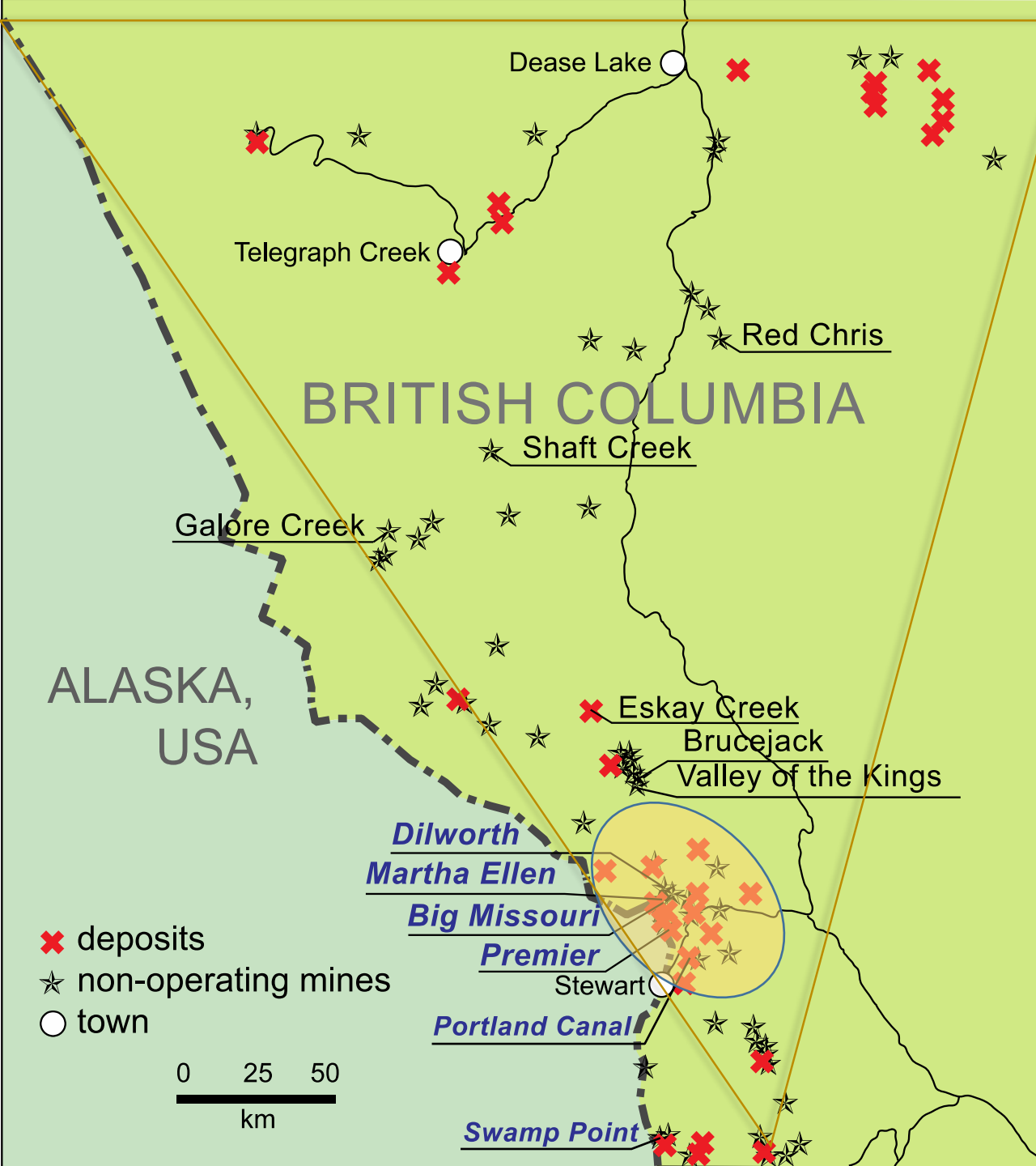


- New Management Team has proven record of creating shareholder value
- IPO of Quadra Mining in 2004 of ~CAD\$145Million
- Initial Quadra share price at CAD\$6 a share, reached as high as \$26 per share in 2008
- Successfully went from junior to mid-tier producer culminating in ~CAD\$3 billion acquisition in 2012 by KGHM



Source: company disclosure, Bloomberg, Factset  
1. Acquired by KGHM in 2012, final full year of production occurred in 2011

# GOLDEN TRIANGLE



- Significant discoveries and production in the area for more than 100 years producing over 8 Million ounces of gold\*
- Noteworthy projects include: Eskay Creek, Brucejack, Snip, Galore Creek, Red Chris, KSM, Valley of the Kings and Shaft Creek
- Yet, despite this track record of new discoveries and mines being built in the area, a British Columbia government report estimates that only 0.0006% of the Golden Triangle has been mined to date\*
- Significant unmined resources today contain over 63 Moz. of gold and 409 Moz of silver\*

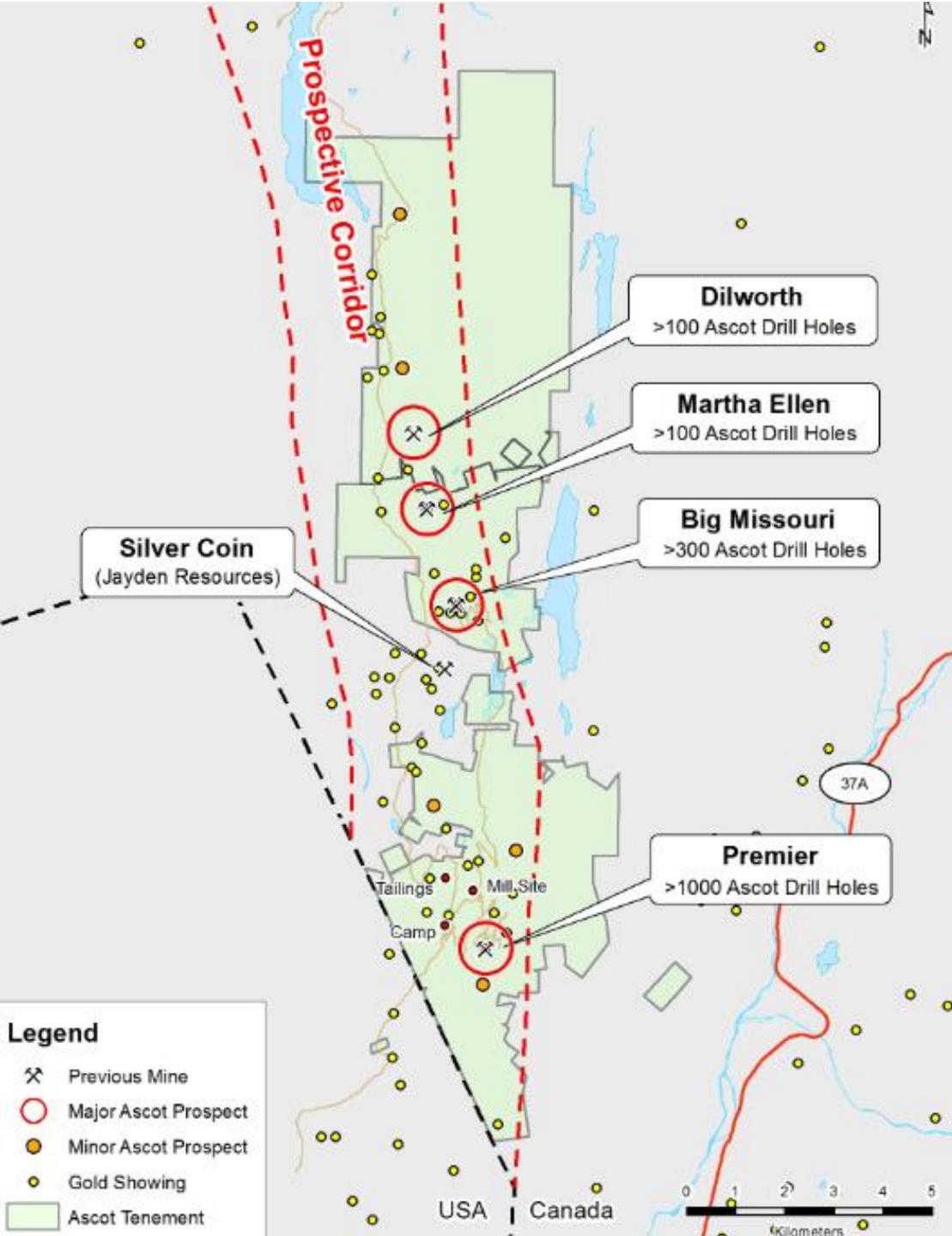
\* Internal estimates <http://www.visualcapitalist.com/story-golden-triangle-british-columbia/> which premier mines, Eskay Creek and Snip mines. Unmined resources include KSM, Galore Creek, Shaft Creek, Valley of the Kings, & Red Chris

# ASCOT ADVANTAGES



- New management with proven track record of value creation for shareholders; taking projects from exploration through to production
- High-grade advanced gold project; so far ~ 1 in 10 holes hit 1 oz. gold per tonne or better grades
- Favourable jurisdiction
- Key infrastructure already in place; 20km from Stewart on public road. Mill and Tailings facility, Power plant and developed underground mine infrastructure
- Exploration upside with 70% of the property not explored yet
- Underrealized value of non-gold assets

# PROSPECTIVE CORRIDOR

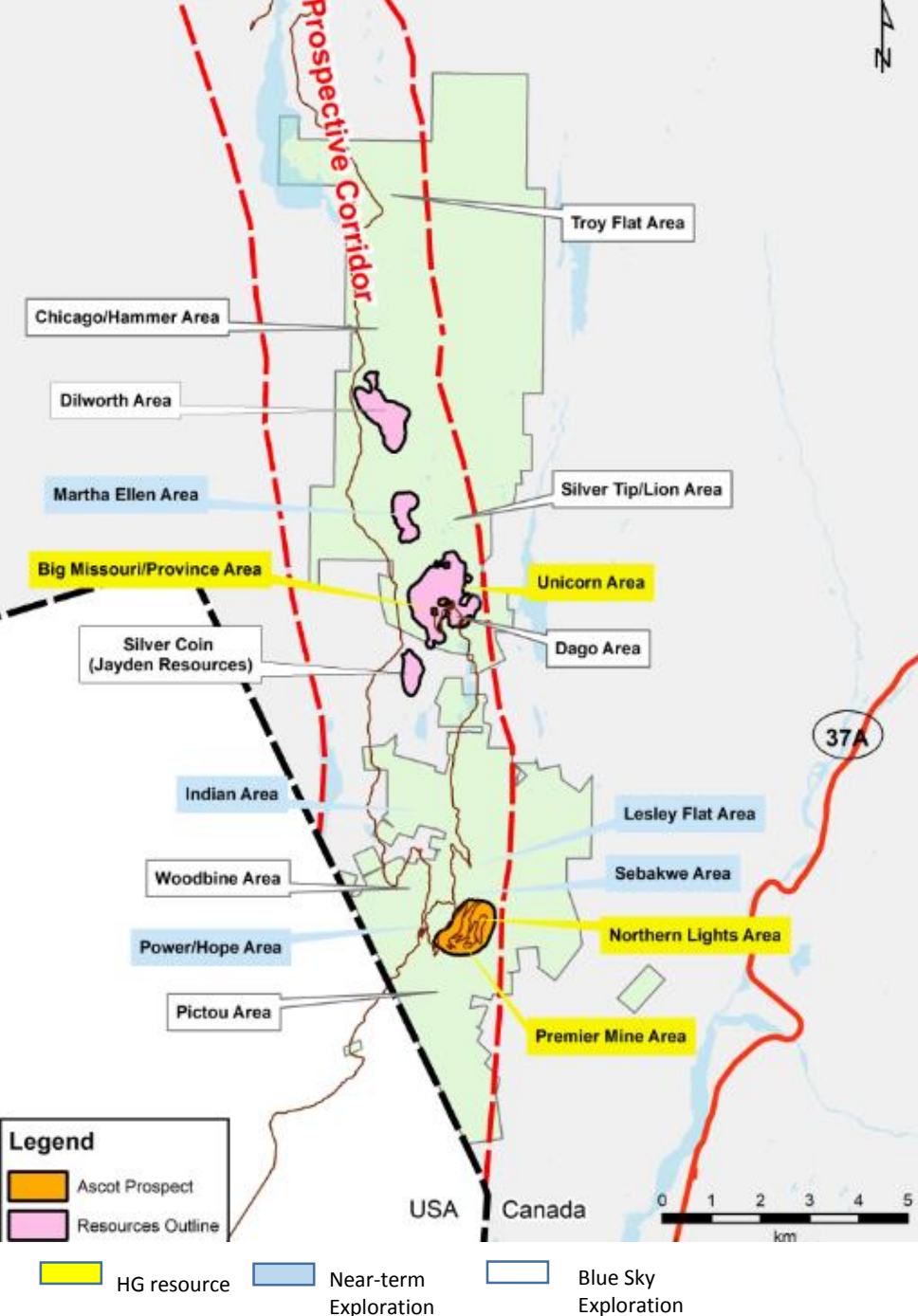


- Drilling to date 628km in ~ 6110 holes
- 4 mines have produced in the past
- Underground mining method will be the most profitable
- ~ **1 in 10 holes hit 1 oz. gold per tonne** or better grades
- One of the most drilled gold projects in Canada
- ~**4 Moz resource to date** based on open pit parameters\*
- Largely continuous blanket of gold & silver mineralization throughout the corridor
- Approximately **70% of the property** has not been explored to date

\* 43-101 report dated Mar. 31, 2014 2.5 Moz. Au Indicated & 1.5 Moz. Au. Inferred

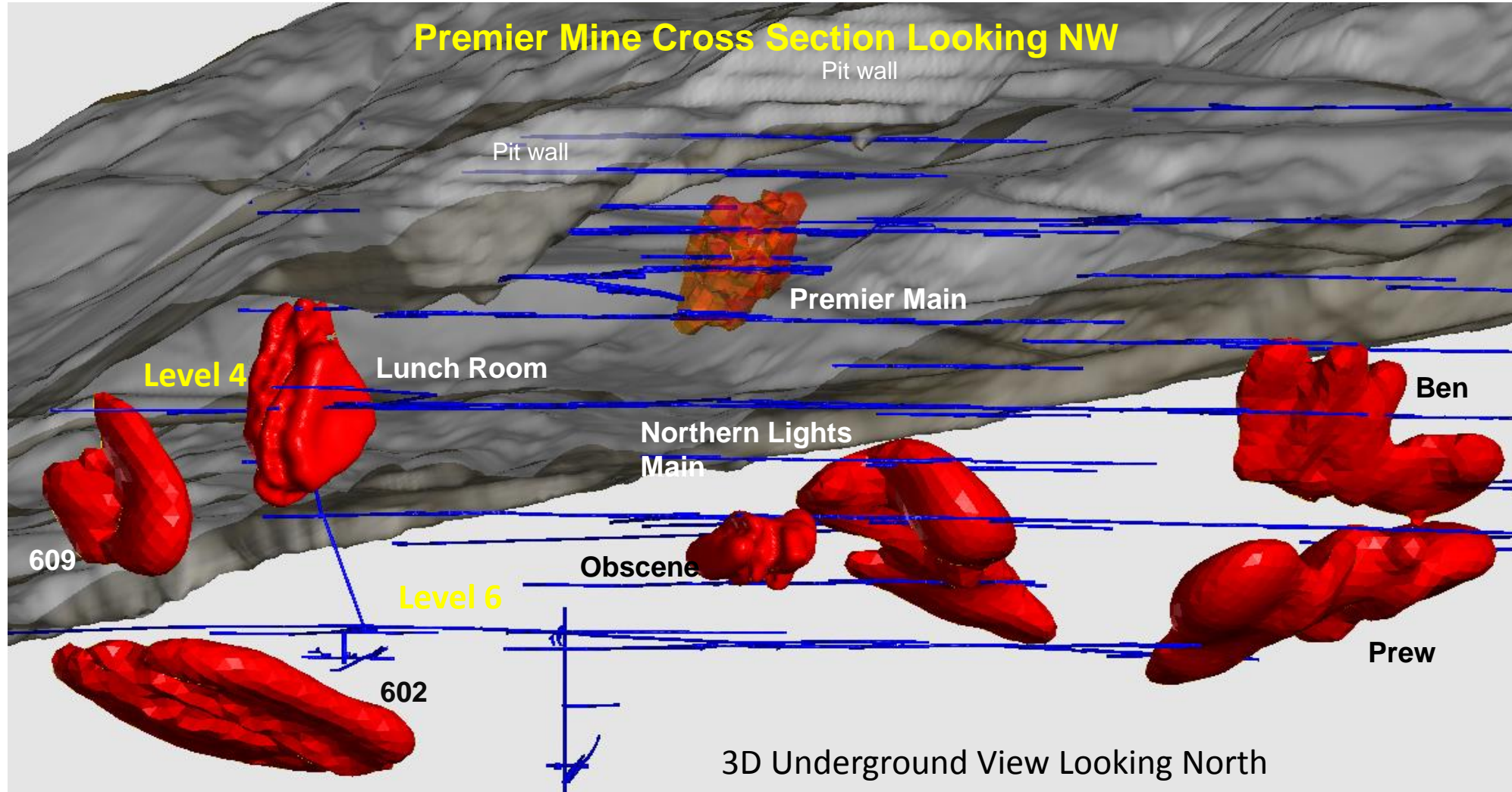
# NEXT STEPS FOR CURRENT TARGETS

- High-grade 43-101 Resource Study underway with Dave Rennie of RPA on the Premier- Northern lights drilling (30m drill spacing)
- Planning for infill drilling of the Big Missouri, Unicorn and Martha Ellen prospects for additional high grade resources
- Near term drill program high potential exploration targets:
  - Indian
  - Sebakwe
  - Power/Hope
- Regional work to improve understanding of the continuity of the mineralized blanket across the property





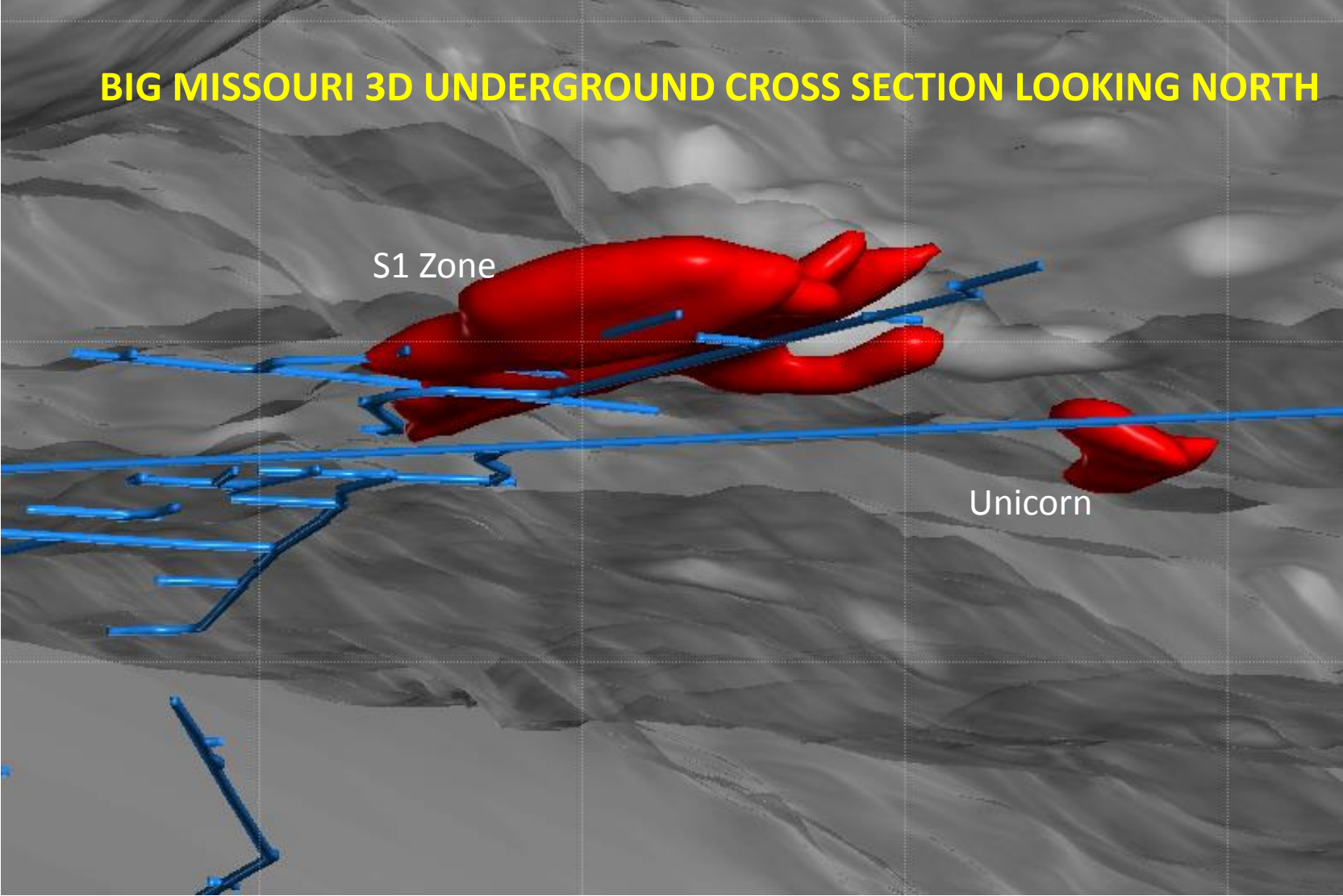
# HIGH GRADE TARGETS IN PROXIMITY TO UG INFRASTRUCTURE



# HIGH GRADE TARGETS IN PROXIMITY TO UG INFRASTRUCTURE



## BIG MISSOURI 3D UNDERGROUND CROSS SECTION LOOKING NORTH



Portal to surface

S1 Zone

Unicorn

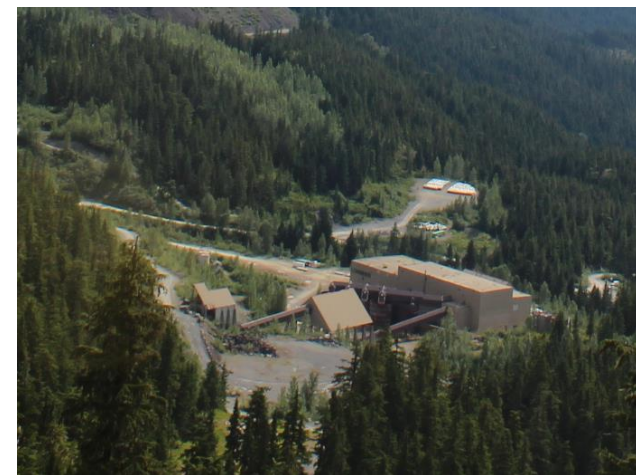
# EXISTING INFRASTRUCTURE



**Water Treatment Plant**



**Long Lake Hydro Dam**



**Mill & Processing Facility**



**Exploration Drills**



**Port of Stewart**

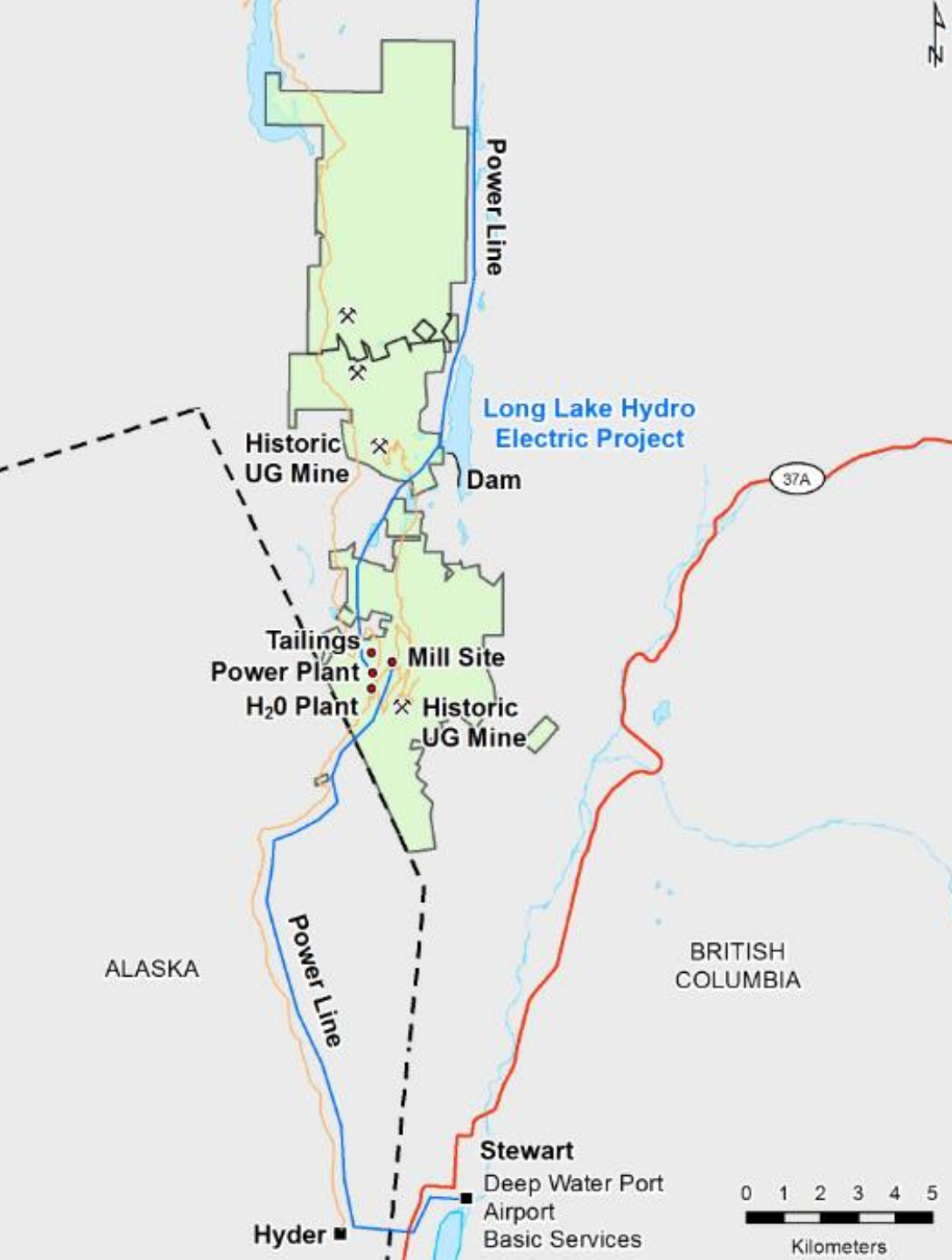


**Mine Portal 6 Level**

# HISTORICALLY WELL DEVELOPED SITE & LOCATION



- 1988 Mill/Assay Lab with 2800 tpd capacity on the site
- Tailings dam with major spillway constructed
- Ventilated side hill access underground mine with 50-100 kilometres of development & haulage ways
- Water treatment plant and settlement ponds with ~200 lps capacity
- Haulage roads from Big Missouri to the mill
- Town of Stewart with deep water port and loading facility is 25km away from the mill by public highway
- Run of river power plant and hydro dam infrastructure on the property ~500m from the mill

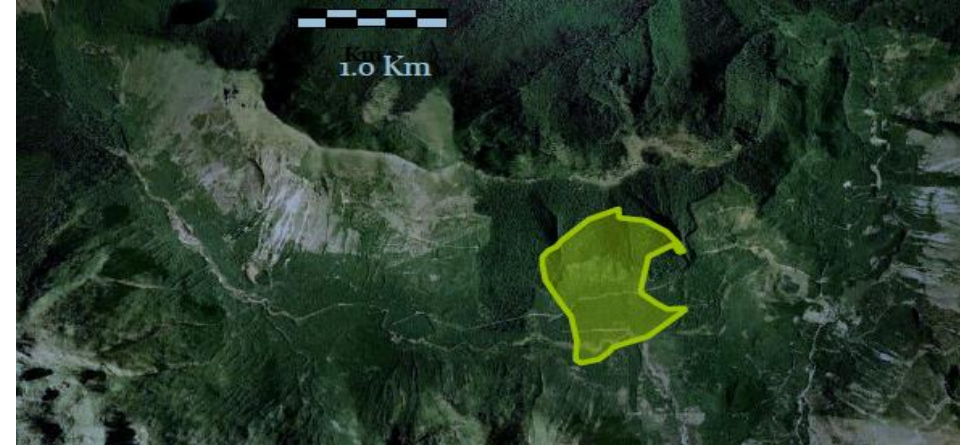


# NON GOLD ASSETS



## Swamp Pt. Aggregate Mine

- Fully permitted mine with deep water port for Panamax vessel
- Currently on care and maintenance
- Due to transport costs shortage in urban California, peer company Polaris Materials recently sold for ~C\$309M
- Opportunity to realize value in a potential sale



## Mt. Margaret Copper Project

- Large Copper-Gold porphyry, located in the Gifford Pinot National Forest in Washington State
- 553Mt of 0.56% CuEq\*
- Mineralized to surface, predetermined step outs
- Potential to increase resources to over 1 billion tonnes
- Poised for next phase of drilling

\* historic geological resource "non 43-101 compliant" stated by Duval, dated 1980 (Taylor) using a 0.33% CuEq cutoff

# MANAGEMENT'S VISION



- Build a new high grade resource estimate
  - Phase I – Premier/Northern Lights from 8 zones in high grade areas;
  - Phase II – Infill drill and add high grade resource of Big Missouri/Unicorn
- Concurrently work towards a PEA/mine permit and meet with First Nations
- Continue to explore the multiple untested targets to add potential new resources
- Potential M&A – valorize non core assets
- Re-start high-grade underground gold mine and validate higher valuation

# WHY INVEST IN ASCOT (TSXV:AOT)?



## Restructured Leadership Team & Renewed Focus

- **Proven track record** with technical, operational & capital markets expertise

## High Grade Advanced Gold Project

- ~ 1 in 10 holes hit **1 oz gold per tonne or better grades**
- **410 km** of new drilling by Ascot to define new resources of very high grade

## Brownfields Asset – Infrastructure

- **Key infrastructure** in place
- Close to the port of Stewart
- Expected **low Capex** to restart

## Favorable Jurisdiction

- Located in **traditional mining** area of BC
- **Geologically endowed** Golden Triangle.

## Exploration Upside

- **70 percent** not yet explored
- **65 km<sup>2</sup> land package** - blanket of **continuous mineralization** trends throughout.
- **8 drill rigs** in operation.

## Value Opportunity

- Scarcity of scalable high-grade gold deposits.
- **Under realized value of non gold assets.**

# APPENDIX



# BOARD OF DIRECTORS



---

**RICK ZIMMER**  
Chairman

Mr. Zimmer is Chairman of Ascot and a corporate director and is the former President and Chief Executive Officer of Far West Mining Ltd., which was acquired by Capstone in 2011. Prior to Far West, Mr. Zimmer worked for Teck Corporation, Teck-Cominco and Teck-Pogo Inc. from 1992 to 2007. He served in various engineering and operating roles, including from 1998 to 2007, as Vice President and Project Manager for Teck-Pogo on the design and construction of the Pogo Mine near Fairbanks, Alaska. Before joining Teck, Mr. Zimmer was employed with Bow Valley Industries as Senior Staff Engineer responsible for evaluation of new mining ventures and the operation of its coal mining division. Mr. Zimmer has over 40 years of experience in the mining industry and has a B.Sc. degree, B.Eng., MBA and is a P.Eng. in the Province of British Columbia. Mr. Zimmer is also a director of Capstone Mining Corp. and Alexco Resources Corp.

---

**KEN CARTER**  
Director

Ken graduated from UBC (1970) BSc Geology. From 1970 to 1988 he worked for Cominco Ltd in North America, Europe and the Middle East. From 1988 to 1991 he was director of Canadian Exploration for Echo Bay Mines Ltd. Since 1991 he has been involved with a number of junior mining companies in a management / director capacity. He retired in 2009 and now serves Ascot as an independent director.

---

**ROBERT EVANS**  
Director

Bob obtained his Chartered Accountant designation in 1974. From 1979 to 1986 he worked in the junior exploration business in Calgary in both oil and gas and mining. Since 1986 he has been in Vancouver, in the junior mining exploration sector. He has been a director / CFO of a number of junior companies, including Stikine Resources Ltd, but now works exclusively with Ascot.

---

**GREG GIBSON**  
Director

Greg is President and CEO of Sprott Mining and Jerritt Canyon Gold LLC. He has more than 30 years' experience in the mining industry as a miner, mine manager, director, CEO and President. Greg's experience has focused on gold and copper mines primarily in Canada, US, and Australia. He successfully led Trelawney Mining and Exploration as President, CEO and director from an early explorer to the \$608 million sale to IAMGOLD in 2012. Greg is a director of Latin American Minerals, Barkerville Gold Mines, Kerr Mines, Inventus Mining Corp, Sprott Mining Inc., Jerritt Canyon Canada, Mag Copper Ltd. and Rae Wallace Mining.

---

**JAMES STYPULA**  
Director

James Stypula is a businessman with over 30 years' experience and a former investment advisor and financier of mineral exploration and development companies in North and South America. Jim was the former Chairman of the Board of Directors of Magellan Minerals Ltd after its merger with Chapleau Resources where he served as CEO and Director. He was also one of the founding directors of Far West Mining Ltd. Jim has acted on numerous board committees and has a wealth of business experience related to the mining industry, especially with respect to the small cap gold sector.

---

**JOHN SWANN**  
Director

John graduated from the Hull Naval College, UK in 1960 and spent 25 years at sea, becoming Captain in 1970. Since retiring from the sea John has worked in the Marine Industry, developing over 200 marine facilities, ports and harbours. John was CEO of his own manufacturing company which was sold to Dupont in 2000. He holds 14 international patents associated with emergency respirator safety equipment. John was involved in the design and construction of the Swamp Point barge transfer system and the proposed ship dock and since then has served Ascot as an independent director.

# STOCK INFORMATION



Stock Ticker	TSX.V: AOT
Common shares outstanding	147,619,639
Stock options	9,975,000
Warrants	11,984,797
<b>Fully diluted common shares</b>	<b>169,579,436</b>
52-week range	\$1.29-\$2.10

- *Share capital as at September 30<sup>th</sup>, 2017*